

July 21, 2011

CONTACT: Marcia McAllister

T: 703-572-0506

C: 571-730-9117

marcia.mcallister@dullesmetro.com

Capital One Drive to Close Overnights for Bridge Work Beginning Tonight, July 21

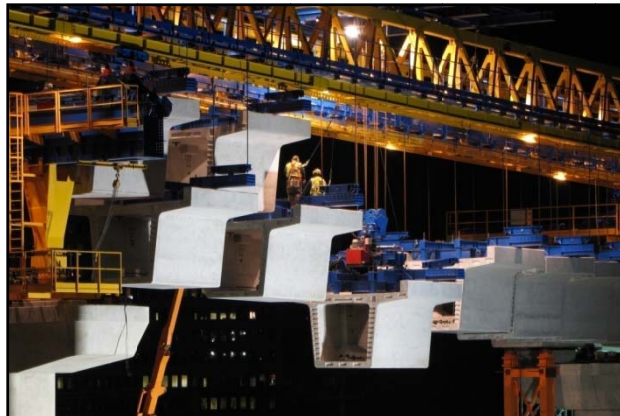
Capital One Drive, the main entrance to the Capital One campus from Route 123 in Tysons Corner, will close from 11 p.m. to 5 a.m. Thursday, July 21 and Friday, July 22.

Dulles Corridor Metrorail Project crews will be working over this entrance, building bridges for future rail lines.

To access Capital One, use Scotts Crossing Road off Route 123. These closures will continue as needed over the next three to four weeks as the bridge is constructed.

Residents of the Gates of McLean community on Scotts Crossing Road should be aware of additional traffic near their development both tonight and tomorrow night.

Police will be onsite. Motorists are urged to use extreme caution, and pay attention to signage. All work is weather-dependent and subject to change.



This photo by Dulles Corridor Metrorail Project staffer Chuck Samuelson illustrates the unique construction occurring overnights. Capital One employees and Route 123 motorists are urged to use extreme caution in this area.

SEE MAP BELOW



**Entrance to Capital One Drive
from Route 123 Closed**



A 24/7 emergency hotline is available for construction-related issues: 877-585-6789.
For general project information: www.dullesmetro.com or 703-572-0506.