

October 23, 2014

**Dulles Corridor Metrorail Project
PHASE 2**

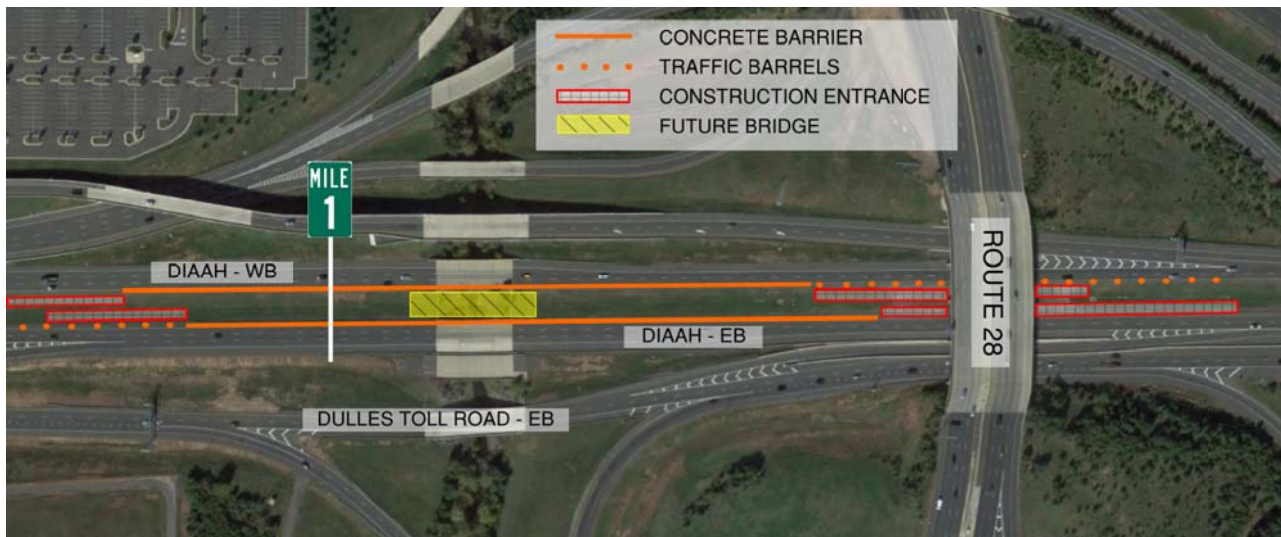
30

CONTACT: Marcia McAllister
T: 703-572-0506
C: 571-730-9117
Marcia.McAllister@dullesmetro.com

Horsepen Run Bridge Construction Begins Along the Dulles International Airport Access Highway

Starting on or about October 27, Dulles Corridor Metrorail Project crews will begin building a line bridge in the median of the Dulles International Access Highway (DIAAH) near mile marker 1.0, just west of Route 28. The bridge will cross over the Horsepen Run stream and is part of the Metrorail alignment that will carry the Silver Line into Washington Dulles International Airport. Construction of the bridge is expected to continue into summer 2015.

Drivers will experience long-term shoulder closures along the median of the DIAAH, as well as intermittent lane closures. Drivers should be attentive to signage and barricades and be alert as large, slow-moving vehicles may be exiting and entering the highway at various times throughout the day.





<><><><><>

A 24/7 emergency hotline is available for Dulles Corridor Metrorail Project construction-related issues:
844-385-7245. For general project information: www.dullesmetro.com or 703-572-0506.