



**March 2, 2009**

## ***Traffic Lanes to Shift on Eastbound Route 7 for 9 Months***

The Dulles Corridor Metrorail Project continues to relocate utilities along Route 7, to make way for future track and station work.

As part of this effort, we will shift the traffic lanes of eastbound Route 7 in front of Pike 7 Plaza, to accommodate utility work in the right lane.

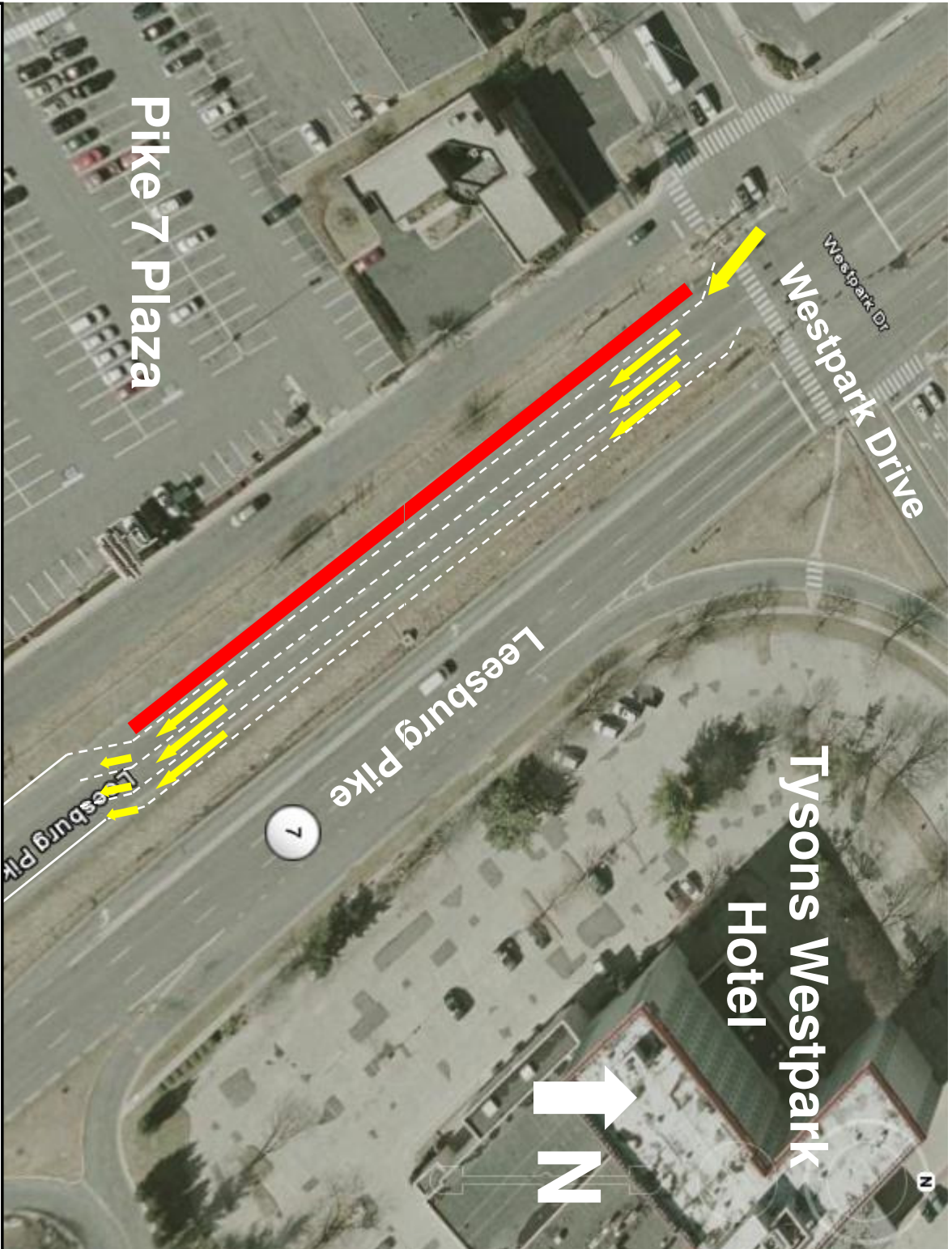
On or about March 9, we will close the right lane and shift traffic towards the median. To maintain three lanes of eastbound traffic, a new lane will be created in the existing median along this stretch of Route 7. A median will still exist between eastbound and westbound traffic lanes. No changes will take place in the westbound lanes.

The adjoining map illustrates the new traffic pattern. The new traffic pattern will be in place for approximately 9 months.

We will continue to keep you informed of any changing traffic patterns as construction moves forward. Please pay close attention to any traffic directional signs that you may encounter on this stretch of Route 7.

In addition, closures will continue in several sections of the service roads adjacent to east and westbound Leesburg Pike (Route 7) between Chain Bridge Road (Route 123) and the Dulles Toll Road. Motorists should stay alert and be prepared to alter their travel on these service roads. Access to all businesses will be maintained throughout the work periods.

A 24/7 emergency hotline is available for utility construction related issues: 877-585-6789. For general project information: [www.dullesmetro.com](http://www.dullesmetro.com) or 703-572-0506.



Pike 7 Plaza

Westpark Drive

Leesburg Pike

Tysons Westpark Hotel



**Dulles Corridor Metrorail Project**

**Route 7 (Leesburg Pike) east lane shift**

**Effective early March to be in place for nine months**

